



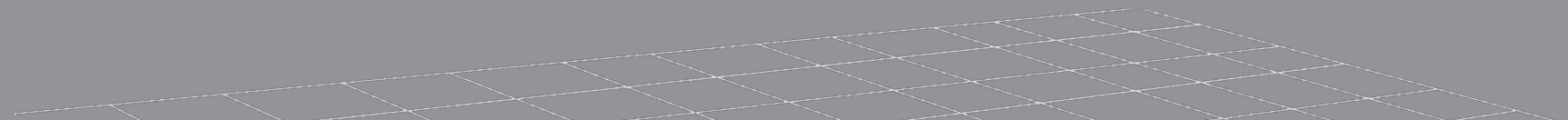
# COVID-19 School Dashboard: Reopen Evidence

**Emily Oster**

Brown University

Markus Brunnermeier  
Princeton

5. November 2020



# Poll Results

1. School reopenings in the US are \_\_\_ correlated with COVID-19 rates

- a. positively
- b. negatively
- c. not



Emily Oster

2. Which country has had the most problematic school reopening?

- a. France
- b. Germany
- c. Israel
- d. UK

3. Should schools be open with an area-level positivity rate of 5%?

- a. Yes
- b. No

# Reopening schools: Adding 2 points/ questions

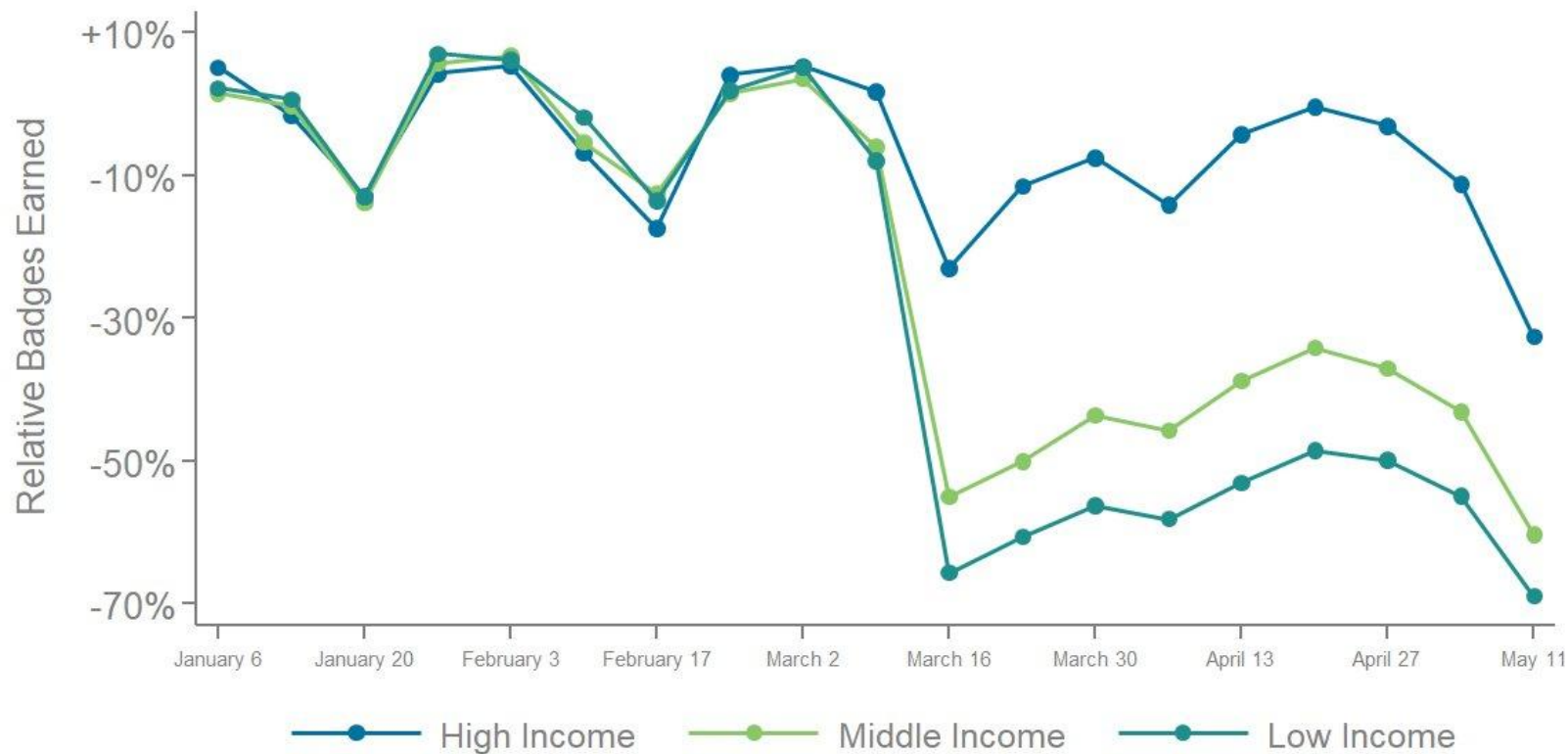
- Ramanan Laxminarayan et al. (2020) SCIENCE
  - Study in South India: >1/2 Million, >85K COVID infected
  - Children and young adults play a surprisingly important role in transmitting of the virus, namely within their own households.
  - India: young population, large households
- Different countries: same virus, but different policies:  
Airing rooms
  - Highly recommended for German schools  
(every 30 min open the windows for 10 min)
  - Not an issue in US schools?
    - Why are there so big differences?



# COVID-19, Children, Child Care & Schools

Emily Oster

## Student Progress in Zearn, by School-Area Income Level For Classrooms Using Zearn *BEFORE* the Shutdown



# Tracking Kids & COVID: Schools, Child Care, Camp

The purpose of this form is to crowdsource information on kids and COVID. This is being run by Emily Oster, of Brown University. The goal is simply to learn more about the experiences of child care providers in the era of COVID, in the hopes to contribute to our understanding of how to safely reopen.

If you fill this out, we'll follow up to see how you might want to be involved and get more information. Thanks for considering!

TL;DR: Want to help us try to get some basic information on kids & COVID? Do you run a child care center, school or camp? Or know someone who does? Fill out the form below and we'll be in touch!

Your Email Address

Your answer

Please check the box which best applies to you

☐ I run a child care setting which has been open most of the time during the pandemic

	All	Larger than 10 Students	New York, Washington, California	Open the Whole Time
<b>Number of Centers</b>	628	328	137	435
<b>Children Served during Pandemic</b>	14,247	12,603	1,680	10,558
<b>COVID-19 Cases in Children</b>	19	16	0	16
<b>Infection Rate in Children</b>	0.13%	0.13%	0.00%	0.15%
<b>Number of Staff During Pandemic</b>	5,156	4,597	612	3,919
<b>COVID-19 Cases in Staff</b>	45	40	3	33
<b>Infection Rate in Staff</b>	0.87%	0.87%	0.49%	0.84%



# All Settings

Week Beginning	Number of Locations Tracked	Number of Students Served	Number of Staff	COVID-19 Cases, Students	COVID-19 Cases, Staff
6/15/2020	20	1,202	439	0	0
6/22/2020	30	2,178	790	0	1
6/29/2020	90	6,580	2,318	1	3
7/6/2020	122	10,474	3,517	2	7
7/13/2020	157	13,306	4,380	3	7
7/20/2020	199	15,453	5,048	2	2
7/27/2020	211	15,221	5,066	3	5
8/3/2020	181	11,489	4,004	2	5
8/10/2020	145	12,462	2,722	1	3
8/17/2020	163	8,283	2,497	1	3
8/24/2020	108	5,813	1,901	1	6



**Table 6. Adjusted Logistic Regression Unmatched Analysis Predicting Case (N=427)  
Versus Non-case (N=56,908)**

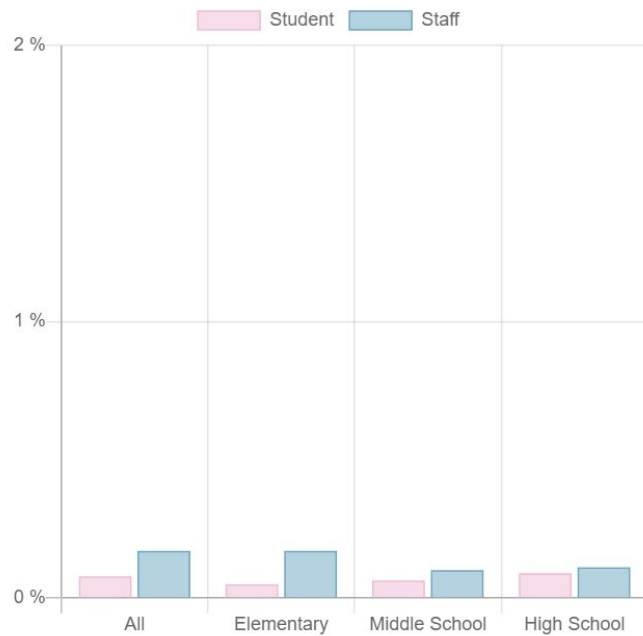
	OR	95% Wald CI		P Value
<b>Exposure to Child care</b>				
No		<i>Reference</i>		
Yes	1.06	0.82	1.38	0.66



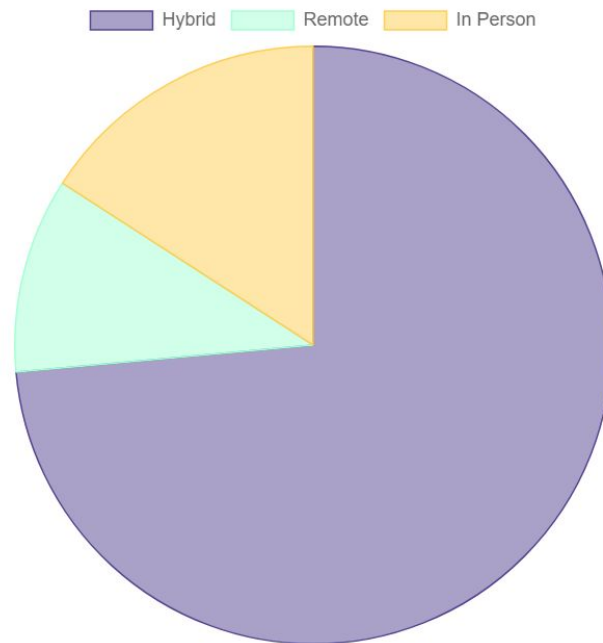
# COVID-19 School Response Dashboard

Power  
qualit

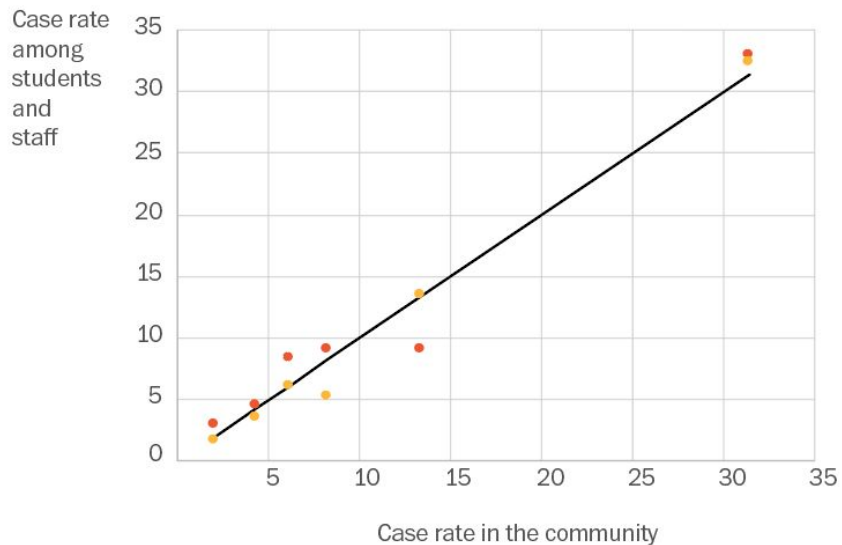
Confirmed COVID-19 Case Rates in Schools



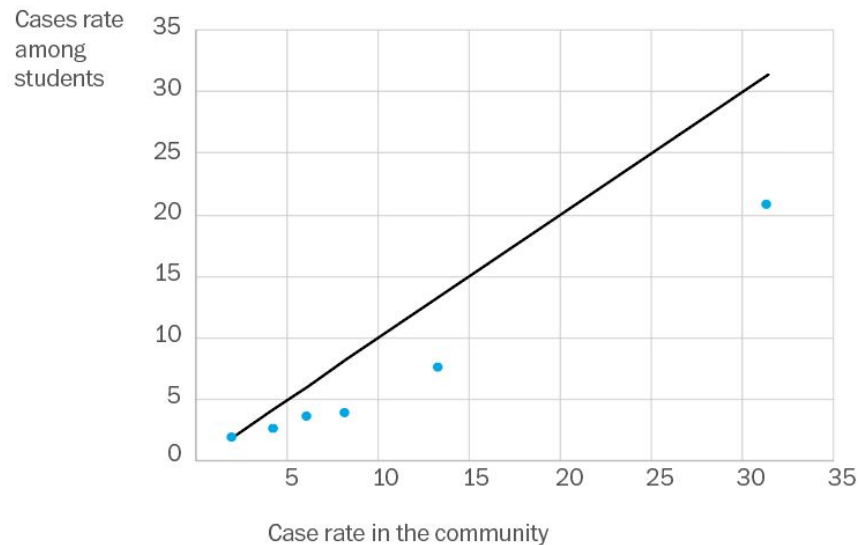
Types of Learning



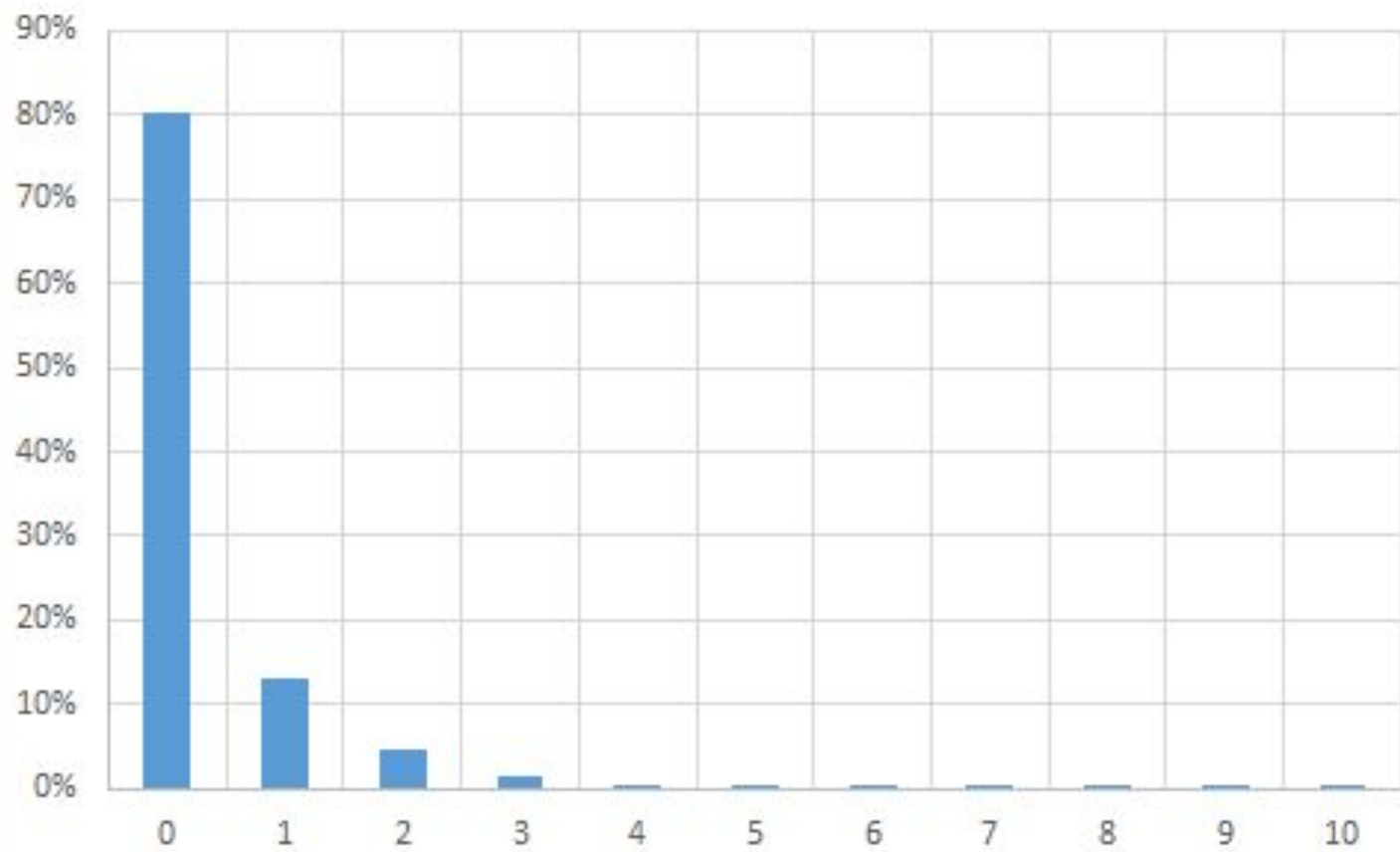
The case rate among **school staff** and **high school students** is similar to the population (case rate per 100,000 people)



The case rate for **elementary and middle school students** is lower than the rate for the general population.



Distribution of Cases, New York



Distribution of Cases, National

